



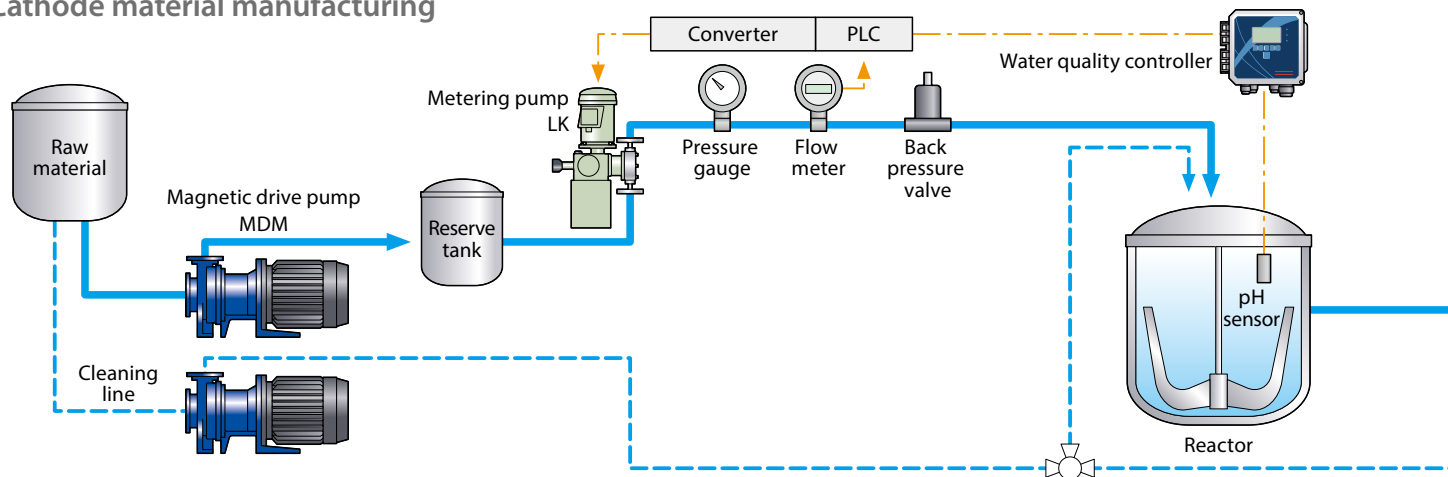
## IWAKI Product Guide for Rechargeable Battery



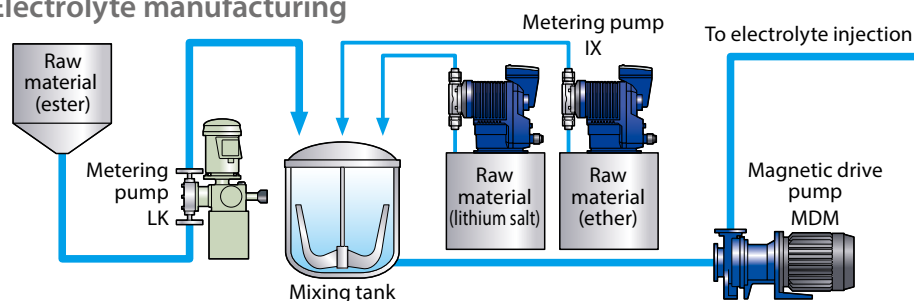
The Heart of Industry

# Rechargeable Lithium-Ion Battery Manufacturing Process

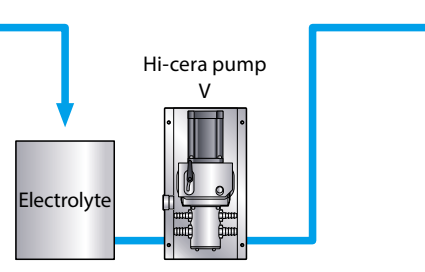
## Cathode material manufacturing



## Electrolyte manufacturing



## Electrolyte injection



## Wide Range, Wide Variation

### Magnetic drive pumps / Metallic centrifugal magnetic drive pumps

From small pumps for OEM applications to large pumps for chemical processing are available. You can select the best pump according to your application.

Electrolyte manufacturing

Cathode material manufacturing



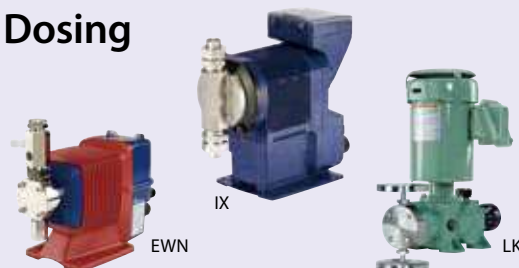
## Applicable to Different Needs of Chemical Dosing

### Electromagnetic metering pumps / Metering pumps

Suitable for any application with its high quality, high accuracy, wide variation, low pulsation, cost-effectiveness and usability.

Electrolyte manufacturing

Cathode material manufacturing



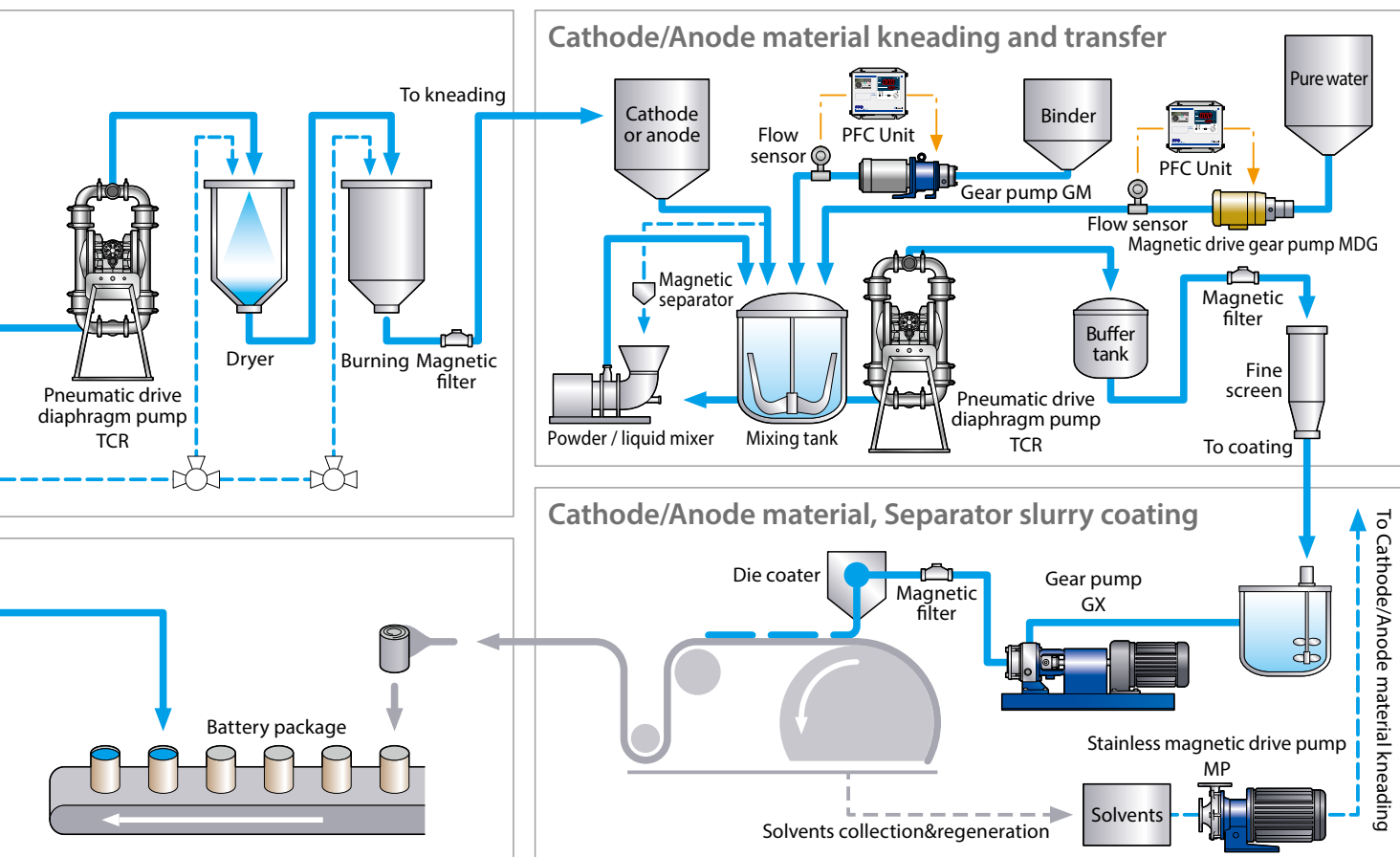
## A Presice Dosing Pump with Good Controllability

### Valveless plunger pumps

Ultra-high repeatability. Preventing clogging and sticking with unique airlock-free valveless structure.

Electrolyte injection





## Ideal for Cathode / Anode Material and Separator Slurry Coating

### Chemical gear pumps

Both high and low viscosity liquids can be handled. Quiet and smooth transfer of liquid without agitating or foaming.

Cathode / Anode material, Separator slurry coating

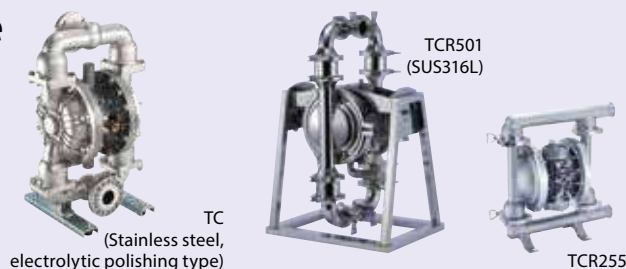


## Wide Variety of Models and Versatile

### Pneumatic drive diaphragm pumps

High-pressure discharge at 0.85 MPa at maximum is possible. Consists of complete self-suction pumps where priming is unnecessary.

Cathode / Anode material kneading and transfer



## Capable of Dispersing and Dissolving Every Powder

### Powder / liquid mixer

A specially shaped impeller dispersed and dissolved liquids and powders uniformly in a short time.

Cathode / Anode material kneading and transfer



## Compact Gear Pumps that Completely Eliminate Leakage Problems

### Magnetic drive gear pumps

Despite its small size, it is capable of high-pressure discharge of Max. 0.6MPa and vacuum degree of 5.3kPa. Superior corrosion resistance. Therefore, the pump can be used to transfer Pure water.

Pure water transfer



MDG-R2

## Reliably Removes Metal Foreign Objects with High Magnetic Force

### Magnetic filter

By attaching it to piping or hoppers, you can easily remove metal foreign objects hidden in liquid.

Also available for powder.

Metal foreign objects removal



Tee's type magnetic filter(1.9T type)  
(For liquid)



3+2 set pear-shaped magnet for hopper  
(For powder)



Front view of  
pear-shaped magnet

**IWAKI CO., LTD.** 6-6 Kanda-Sudacho 2-chome Chiyoda-ku Tokyo 101-8558 Japan TEL : (81)3 3254 2935 FAX : 3 3252 8892

IWAKI has global net work.  
Please find your distributor location at

[www.iwakipumps.jp](http://www.iwakipumps.jp)

European Headquarter	<b>IWAKI Europe GmbH</b>	TEL: (49)2154 9254 0	FAX: (49)2154 9254 48	U.S.A.	<b>IWAKI America Inc.</b>	TEL: (1)508 429 1440	FAX: (1)508 429 1386
Germany	<b>IWAKI Europe GmbH</b>	TEL: (49)2154 9254 50	FAX: (49)2154 9254 55	Brazil	<b>IWAKI Do Brasil Comercio De Bombas Hidraulicas LTDA.</b>	TEL: (55)19 3244 5900	FAX: (55)19 3244 5900
The Netherlands (Netherlands Branch)	<b>IWAKI Europe GmbH</b>	TEL: (31)74 2420011	FAX: (49)2154 9254 48	China (Shanghai)	<b>IWAKI Pumps (Shanghai) Co., Ltd.</b>	TEL: (86)21 6272 7502	FAX: (86)21 6272 6929
Italy (Italy Branch)	<b>IWAKI Europe GmbH</b>	TEL: (39)0445 561219	FAX: (39)0445 569088	China (Hong Kong)	<b>IWAKI Pumps Co., Ltd.</b>	TEL: (852)2607 1168	FAX: (852)2607 1000
Spain (Spain Branch)	<b>IWAKI Europe GmbH</b>	TEL: (34)934 741 638	FAX: (34)934 741 638	China (Guangzhou)	<b>GFTZ IWAKI Engineering &amp; Trading Co., Ltd.</b>	TEL: (86)20 84350603	FAX: (86)20 84359181
Poland (East Europe Branch)	<b>IWAKI Europe GmbH</b>	TEL: (48)12 347 0755	FAX: (48)12 347 0900	Singapore	<b>IWAKI Singapore Pte Ltd.</b>	TEL: (65)6316 2028	FAX: (65)6316 3221
Denmark	<b>IWAKI Nordic A/S</b>	TEL: (45)48 242345		Indonesia (Indonesia Office)	<b>IWAKI Singapore Pte Ltd.</b>	TEL: (62)21 6906606	FAX: (62) 21 6906612
Finland	<b>IWAKI Suomi Oy</b>	TEL: (358)10 201 0490		Malaysia	<b>IWAKim SDN. BHD.</b>	TEL: (60)3 7803 8807	FAX: (60)3 7803 4800
Norway	<b>IWAKI Norge AS</b>	TEL: (47)23 38 49 00		Korea	<b>IWAKI Korea Co.,Ltd.</b>	TEL: (82)2 6238 4800	FAX: (82)2 6238 4801
Sweden	<b>IWAKI Sverige AB</b>	TEL: (46)8 511 72900		Taiwan	<b>IWAKI Pumps Taiwan Co., Ltd.</b>	TEL: (886)2 8227 6900	FAX: (886)2 8227 6818
Belgium	<b>IWAKI Belgium N.V.</b>	TEL: (32)13 670200	FAX: (32)13 672030	Thailand	<b>IWAKI (Thailand) Co.,Ltd.</b>	TEL: (66)2 322 2471	FAX: (66)2 322 2477
France	<b>IWAKI France S.A.</b>	TEL: (33)1 69 63 33 70	FAX: (33)1 64 49 92 73	Australia	<b>IWAKI Pumps Australia Pty Ltd.</b>	TEL: (61)2 9899 2411	FAX: (61)2 9899 2421

( ) Country codes

**Caution for safety use:**  
Before use of pump, read instruction manual carefully to use the product correctly. Actual pumps may differ from the photos. Specifications and dimensions are subject to change without prior notice. For further details please contact us.

**Legal attention related to export.**  
Our products and/or parts of products fall in the category of goods contained in control list of international regime for export control. Please be reminded that export license could be required when products are exported due to export control regulations of countries. The posting and copying from this catalogue without permission is not accepted firmly.